



<http://www.powerpromanager.com>

---

## *Configuration Guide*

*Version 1d*



29222 Rancho Viejo Rd.

Suite 114

San Juan Capistrano, California, 92675

<http://www.exceleratesoftware.com>

---

## ABOUT EXCELERATE SOFTWARE

Established in 1994, Excelerate Software develops affordable, highly functional software products for small businesses and education customers. Our software products include:

- PowerPro Manager PC Network Energy Management software
- SpamGate anti-spam appliance
- eMail Archive appliance
- SpyGlass/iX

**CONTENTS**

- About Exceleerate Software .....2
- Overview .....5
- System Requirements .....5
  - Communications Diagram .....6
- Installation .....6
  - Infrastructure .....6
  - Console Server – Prerequisite Software .....8
    - .NET 2.0 Installation .....8
    - SQL 2005 Express Installation .....9
  - Console Server – PowerPro .....15
  - Service Client .....18
- Configuration .....21
  - Client .....21
    - Power Settings .....21
    - Inactivity Settings .....23
    - Power Savings Schedule .....24
    - Energy Settings .....25
  - Server .....26
    - Main Console Actions .....26
    - Auto-Grouping .....35
    - Reports .....37
    - Database Management .....38
    - Wake On Lan .....39
    - Notifications .....40
    - Backup .....40

License .....40

Appendix A – Active Directory GPO Based Deployment .....41

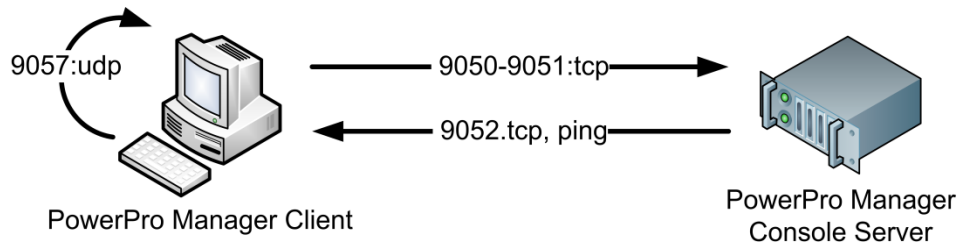
**OVERVIEW**

Accelerate Software PowerPro is an easy to use, software system designed to facilitate enterprise level management and reporting of PC power usage.

**SYSTEM REQUIREMENTS**

<p>Client Requirements</p>	<p>Windows 2000 Service Pack 4; Windows Server 2003 Service Pack 1; Windows XP Service Pack 2, Vista</p> <p>Network Connectivity to the PowerPro Console computer for reporting</p> <p>ACPI support enabled</p> <p>Firewall must allow the following:</p> <ul style="list-style-type: none"> <li>• 9052:tcp from Console Server, if managed</li> <li>• 9057:udp to and from itself</li> <li>• 9050-9051:tcp to Console Server, if managed</li> </ul> <p>or the following programs added to the Firewall Exemptions list:</p> <ul style="list-style-type: none"> <li>• &lt;drive:&gt;\&lt;path&gt;\powerpromanagerservice.exe</li> <li>• &lt;drive:&gt;\&lt;path&gt;\powerpromanagergui.exe</li> </ul> <p>The client must resolve the name “powerpro” to the address of the console server, if managed</p>
<p>Console Requirements</p>	<p>Windows 2000 Service Pack 4; Windows Server 2003 Service Pack 1; Windows XP Service Pack 2</p> <p>Microsoft SQL Express 2005 with Service Pack 2</p> <p>Microsoft .Net 2.0 Framework</p> <p>10MB Free Disk Space, plus up to 4GB Free Disk Space for Database</p> <p>Network connectivity</p> <p>Firewall must allow the following:</p> <ul style="list-style-type: none"> <li>• 9052:tcp outbound to clients</li> <li>• ICMP (ping) outbound to clients (version 1.0.1.9 or older)</li> <li>• 9050-9051:tcp inbound from clients</li> </ul>

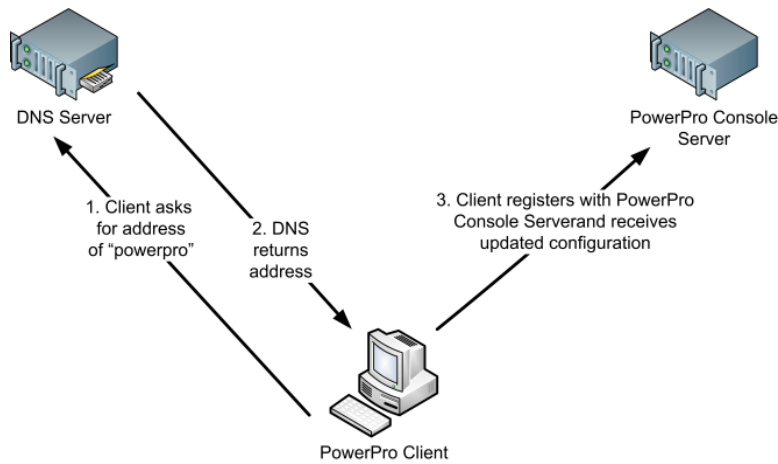
COMMUNICATIONS DIAGRAM



INSTALLATION

INFRASTRUCTURE

The PowerPro Manager Service looks to register with the PowerPro Manager Console, and is hard coded to search for a computer named “powerpro”. To facilitate this registration, create a DNS record (either A or CNAME) named powerpro that points to the PowerPro Manager Console computer.

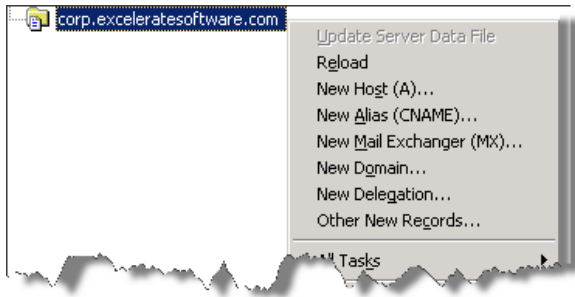


**POWERPRO NAME RESOLUTION**

A key element to centrally managing your PowerPro Manager workstations is providing name resolution to them. When the PowerPro Manager workstation service starts, it attempts to contact the console using the name “powerpro”. When it resolves the name and connects to the console, it updates its configuration.

## DNS

Perhaps the easiest method to provide name resolution is to create a record in your DNS server. You have two options.



The first option is to create a CNAME or alias to the console computer. If you are using Microsoft DNS server, right-click on the zone in which the workstation resides. Select New Alias (CNAME)... . From the window that appears, navigate through your server, forward lookup zones, zones and records until you ultimately select the server where the PowerPro Manager Console is installed. Give the entry an alias name of powerpro.

The second option is to create a Host or A record for powerpro. When creating the new Host record, specify the name powerpro and the IP address of the computer where the Powerpro Manager Console is installed.

ISC Bind and other DNS implementers should consult their documentation for guidance on creating CNAME and A records.

## HOSTS FILE

For small implementations or tests, you may opt to configure the individual workstations to resolve powerpro directly. On supported Windows based computers, navigate to and edit the file the hosts file C:\Windows\System32\drivers\etc\hosts. On supported Macintosh computers, use the Terminal and administrative privileges to edit the file /private/etc/hosts.

Add a line specifying the IP address of the PowerPro Console computer, similar to the following example (Note that the IP address and “powerpro” are separated by a tab):

```
10.1.4.20    powerpro
```

## TEST

Once you have your name resolution changes in place, test by pinging “powerpro” from the workstation. You should see the IP address resolved and a response.

```
C:\> ping powerpro
Pinging powerpro.exceleratesoftware.com [10.1.4.20] with 32 bytes of data:
Reply from 10.1.4.20: bytes=32 time=4ms TTL=128
Reply from 10.1.4.20: bytes=32 time=1ms TTL=128
Reply from 10.1.4.20: bytes=32 time=2ms TTL=128
Reply from 10.1.4.20: bytes=32 time=2ms TTL=128
Ping statistics for 10.1.4.20:
    Packets: Sent = 4, Received = 4, Lost = 0 (0% loss),
```

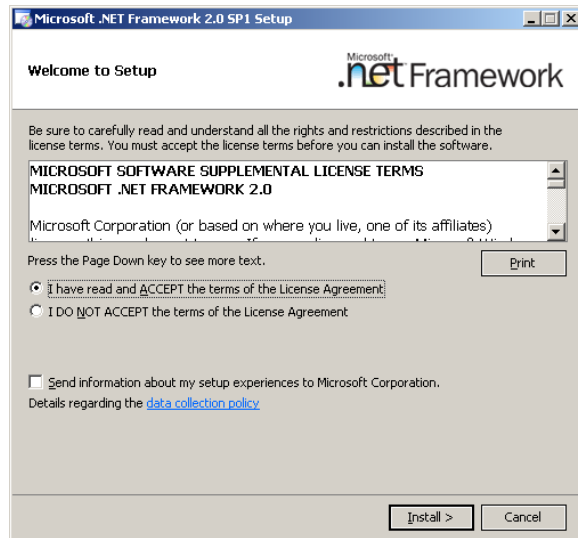
CONSOLE SERVER – PREREQUISITE SOFTWARE

PowerPro Manager requires a local copy of SQL Express 2005 to maintain its records. SQL Express is freely available from Microsoft’s website, and is currently at service pack level 3. SQL Express 2005 requires the .NET framework version 2, also available at the Microsoft website.

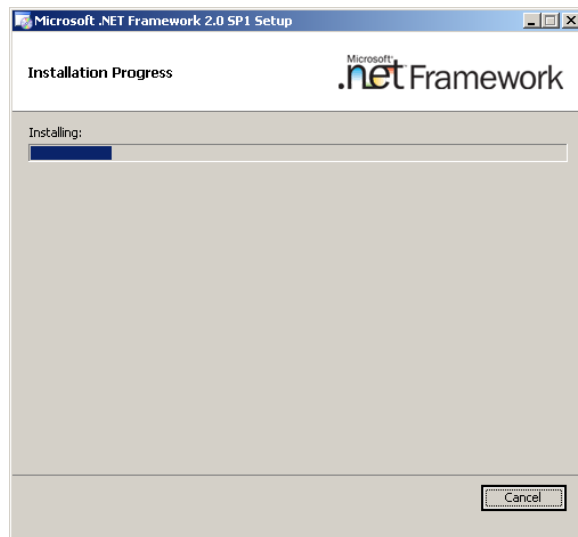
.NET 2.0 INSTALLATION

If you do not have the .NET 2.0 framework, install as follows. Otherwise, skip to the SQL Express 2005 installation section below.

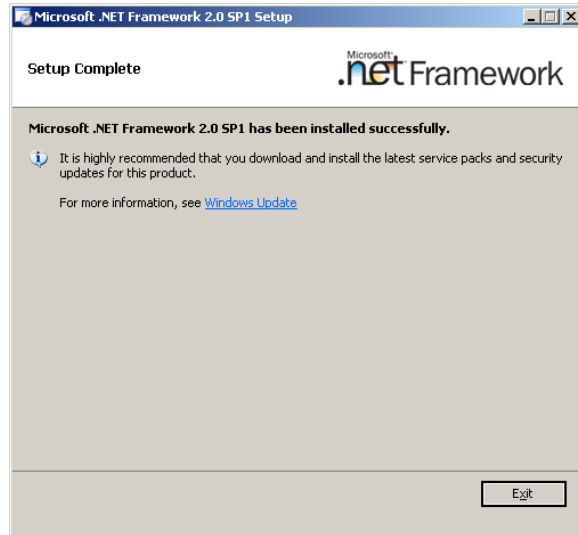
Start the .NET 2.0 Framework installer. Accept the licensing agreement and click Install to continue.



The installation progress will be indicated.



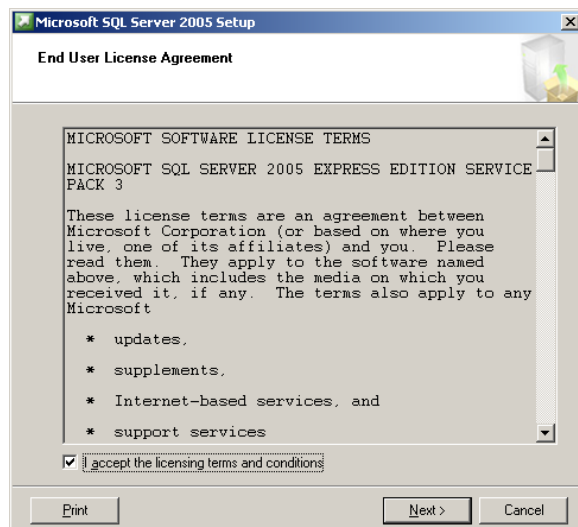
Press the Exit button when complete.



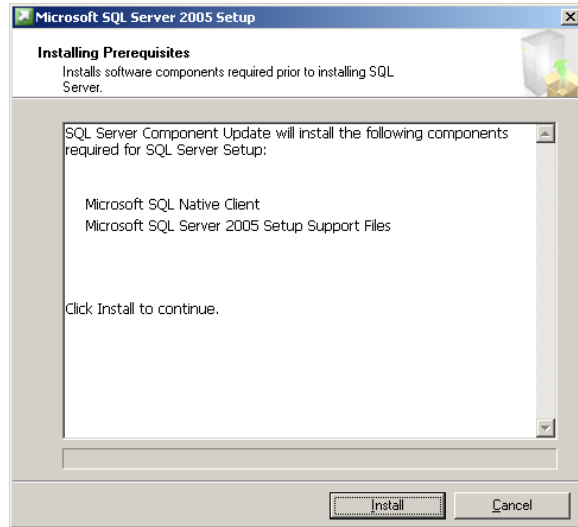
---

## SQL 2005 EXPRESS INSTALLATION

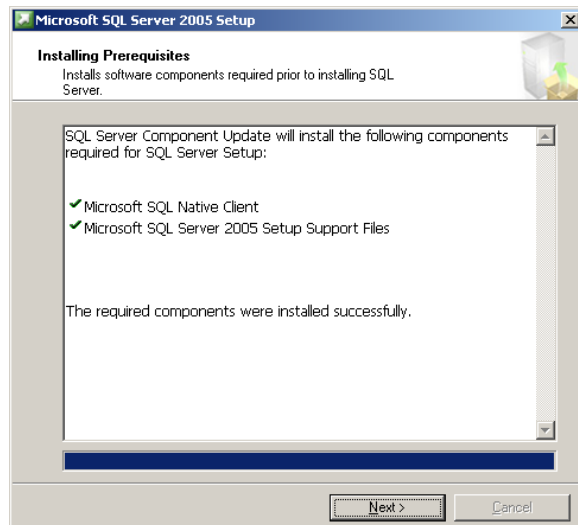
Start the SQL 2005 Express installation. Accept the license terms and click Next to continue.



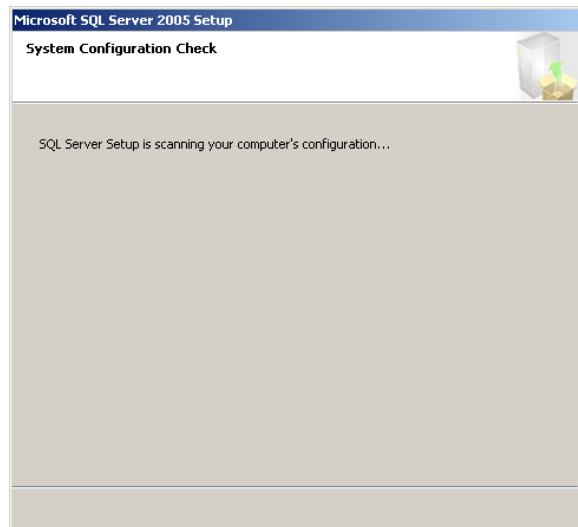
Click the Install button to continue the installation.



After the prerequisite components are installed, click Next to continue.



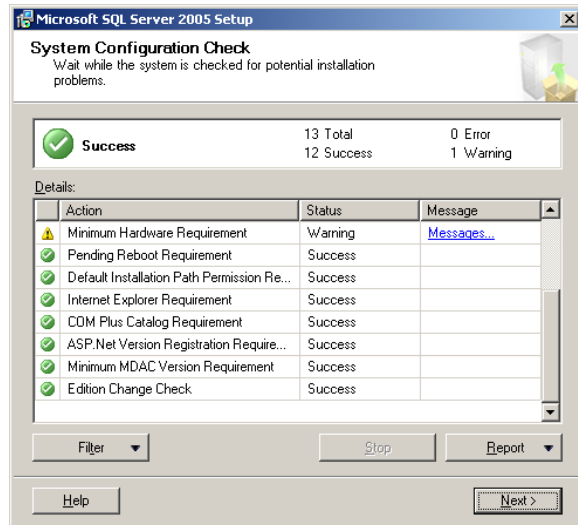
Your system will be checked.



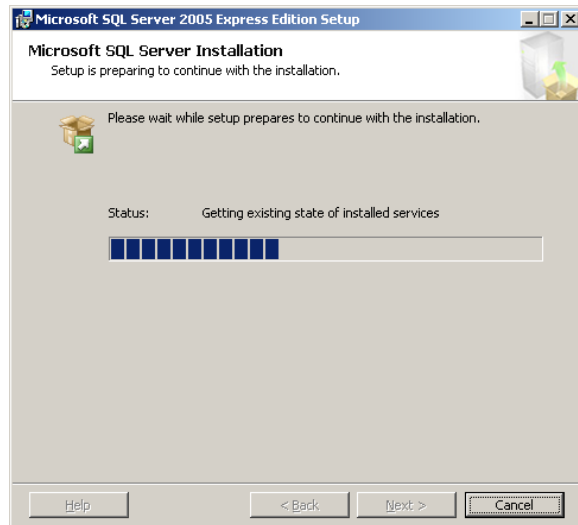
An installation wizard will appear. Click Next at the welcome screen.



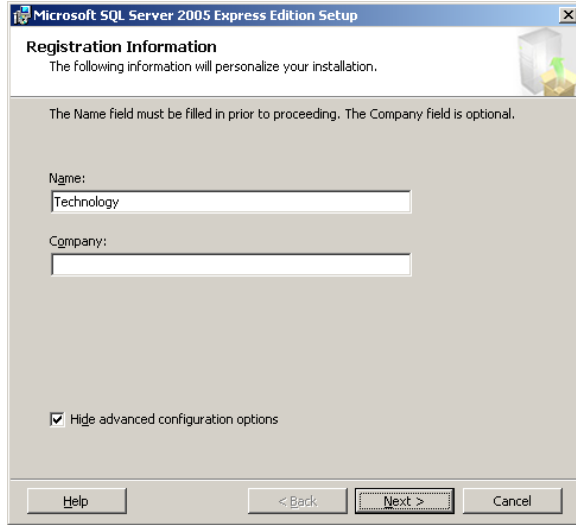
Again, your system is analyzed. Review and address any messages that appear, canceling and restart if necessary. Click Next to continue.



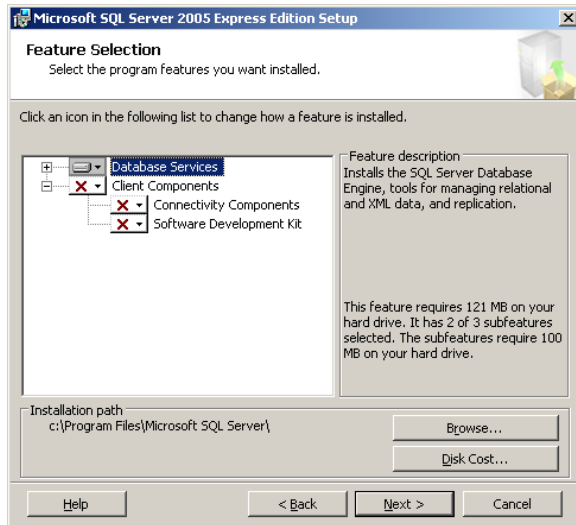
The installation progress will be displayed.



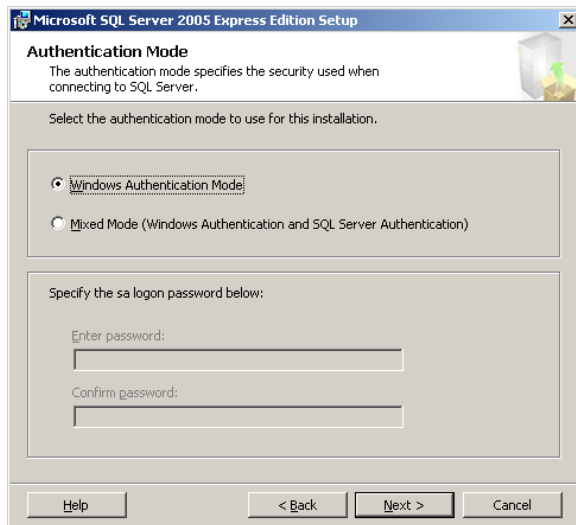
Enter your registration information and then click Next to continue.



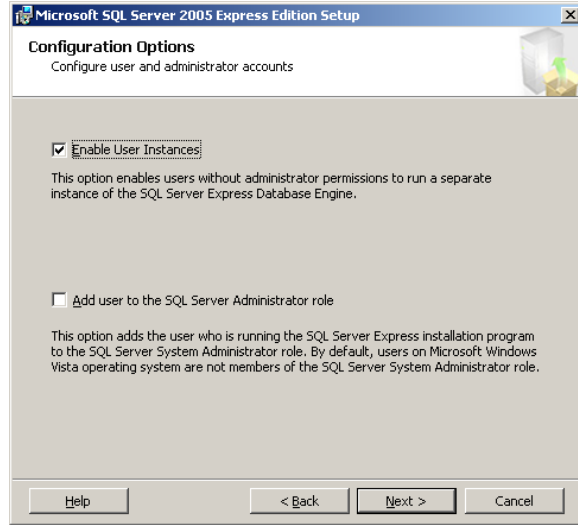
Accept the default settings and click Next to continue.



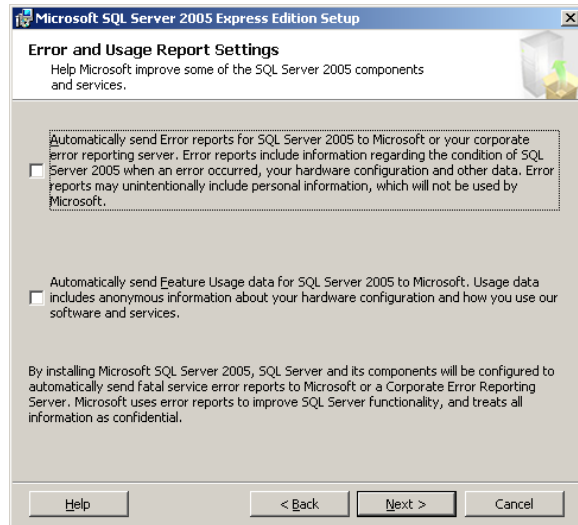
Accept the default Windows Authentication Mode and click Next to continue.



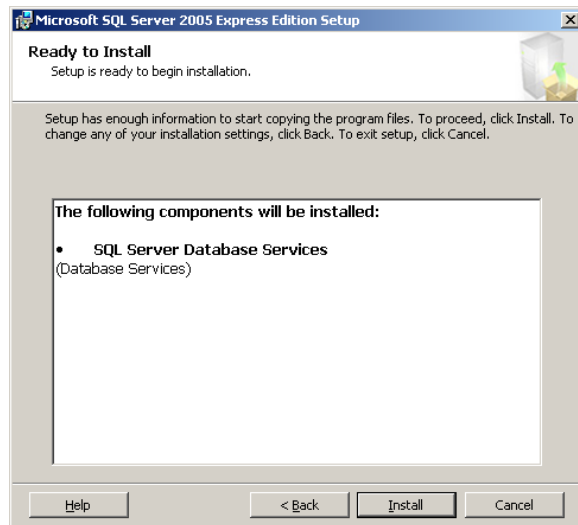
Accept the default user and administrative role selections and click Next to continue.



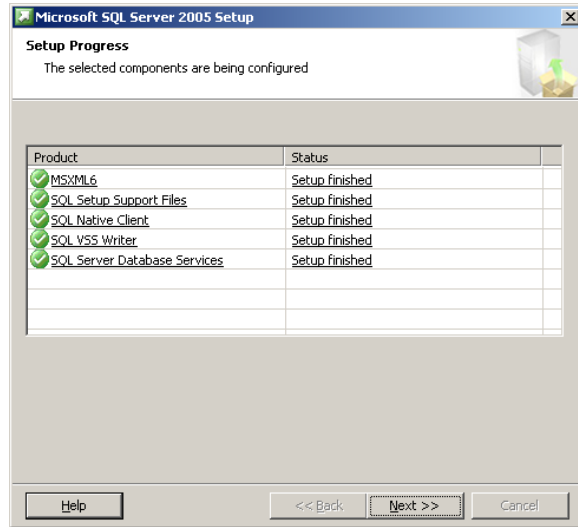
Optionally elect to send error and usage reports to Microsoft, and then click Next.



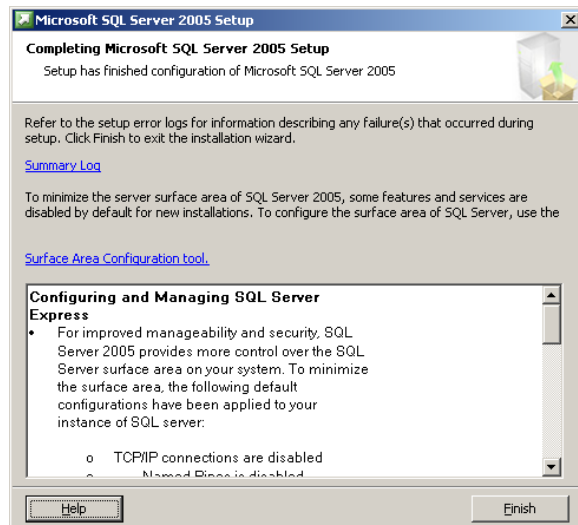
At the Ready screen, click Install.



Once the setup progress is complete, click Next.



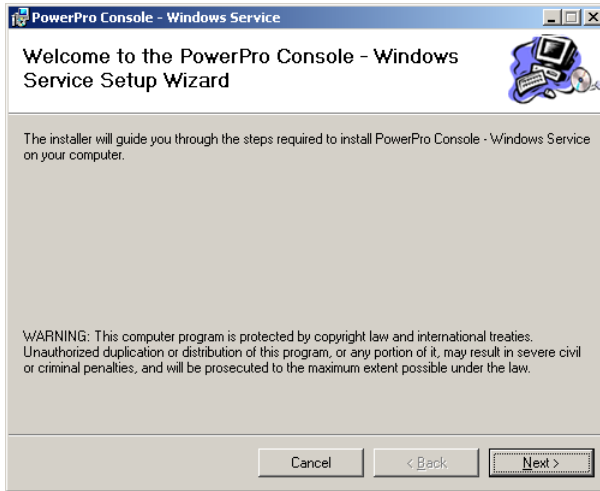
Click Finish.



## CONSOLE SERVER – POWERPRO

PowerPro Manager requires Microsoft SQL Express 2005 SP2 and the Microsoft .NET 2.0 Framework. Both components are freely available from the Microsoft Website, and should be installed using their default configuration.

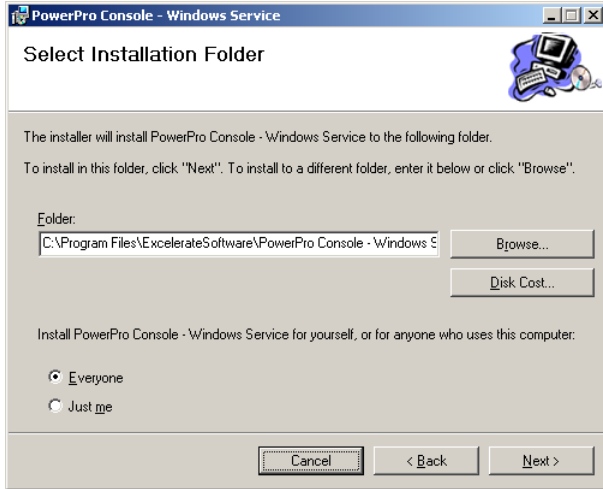
To install the console server, run the PowerPro\_ServiceSetup.msi installation program.



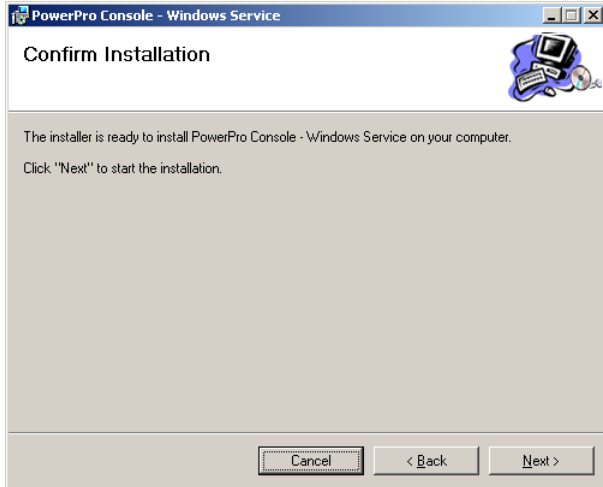
At the welcome screen, click **Next** to continue.



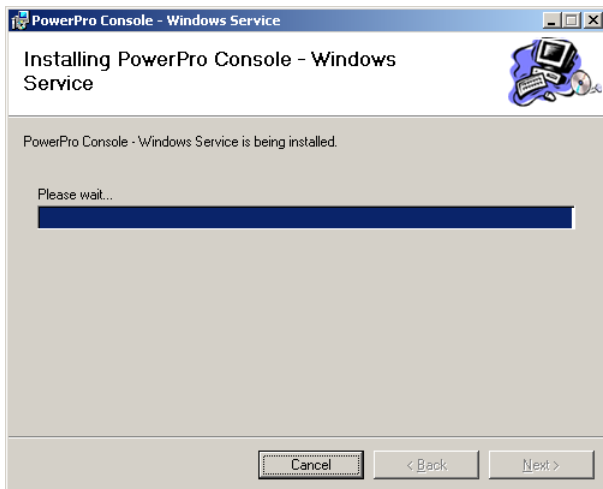
Read the license terms and select **I Agree** to allow continuation of the installation. Click **Next** to continue.



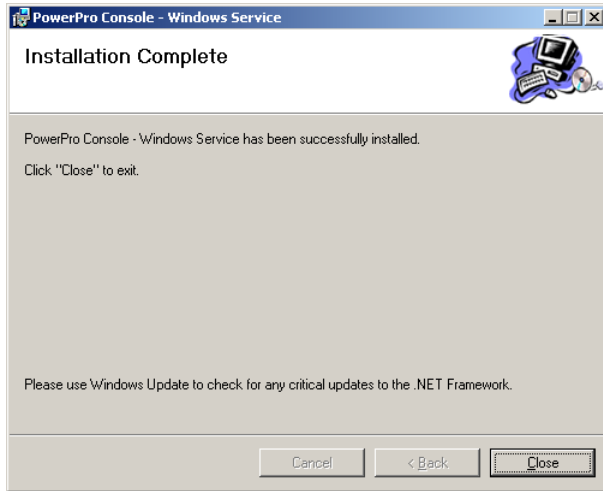
Select an installation folder (the default is %Program Files\Excelerate Software\) and whether to install for **Everyone** or **Just me**. Click **Next** to continue.



Confirm that you wish to continue the installation by clicking **Next**.



You will see an installation progress screen.

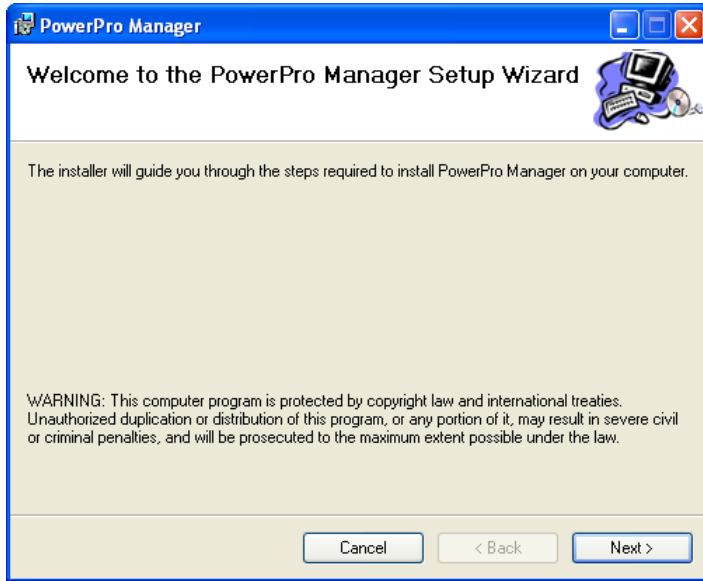


When the program is installed, you will be notified.  
Click **Close**.

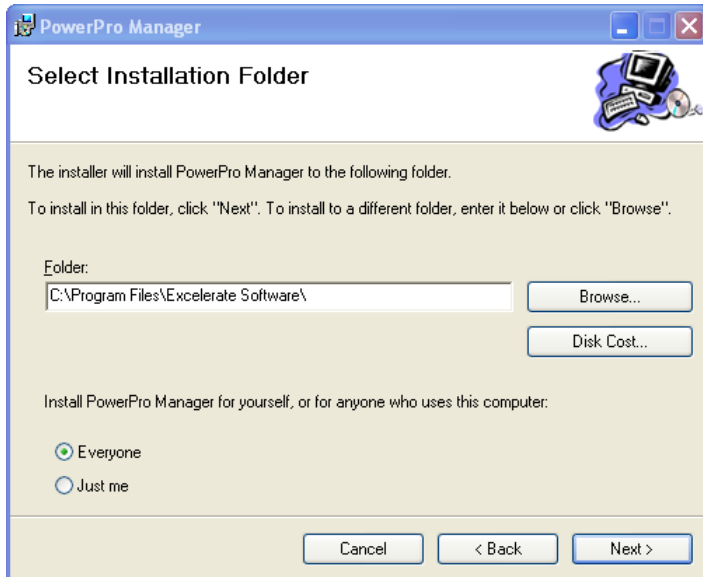
## SERVICE CLIENT

To manually install the PowerPro Manager client, perform the following steps.

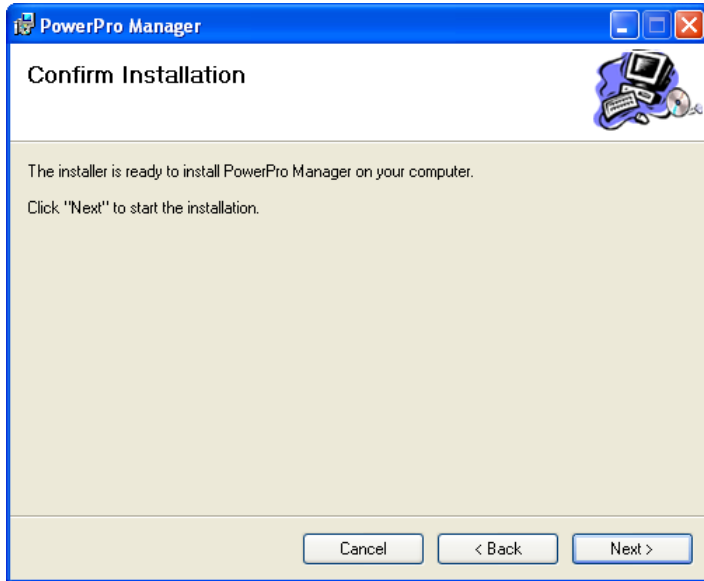
On the client computer, run the PowerProManagerServiceSetup.msi installation program.



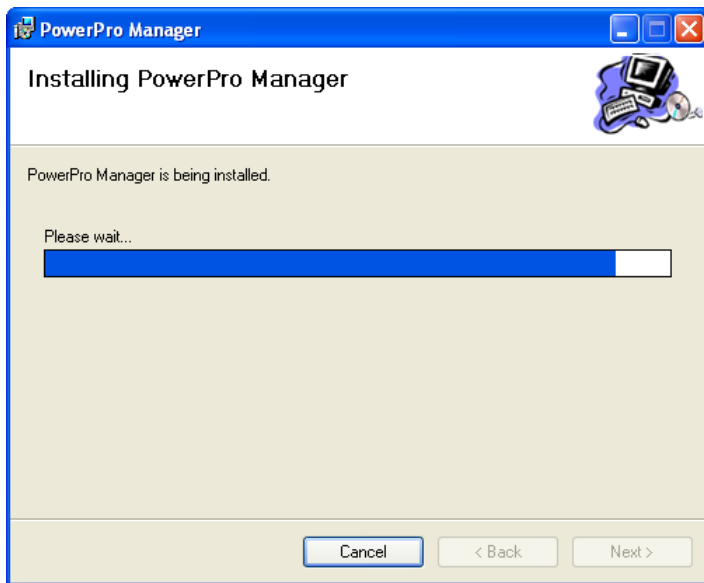
At the welcome screen, click **Next** to continue.



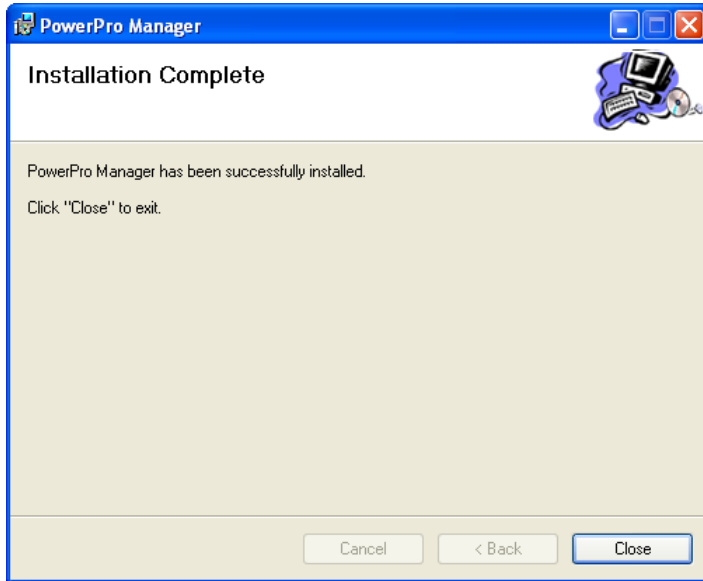
Select an installation folder (the default is %Program Files\Excelerate Software\ ) and whether to install for **Everyone** or **Just me**. Click **Next** to continue.



Confirm that you wish to continue the installation by clicking **Next**.



You will see an installation progress screen.



When the program is installed, you will be notified. Click **Close**.

Once installed, the PowerPro Manager service will start. Each time the PowerPro Manager service starts, it will look for the PowerPro Manager console. Once found, configuration of the client computer is controlled by the console. If a PowerPro Manager console is not found, the power management features are managed locally.

To deploy the application using Active Directory, please refer to appendices.

## CONFIGURATION

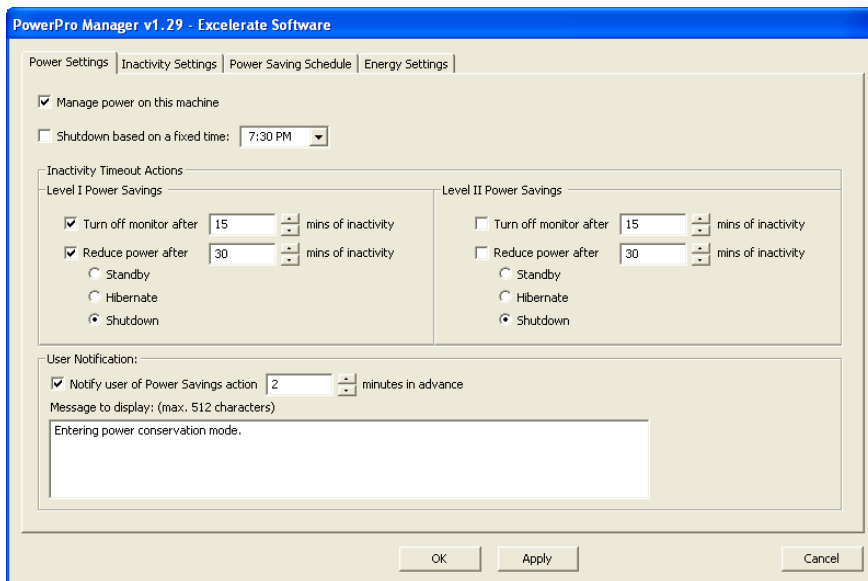
### CLIENT

In standalone mode, power management features are configured at the client. To configure the settings, open the configuration console, typically installed in Start – All Programs – PowerPro Manager-Excelerate Software – PowerPro Manager.

The PowerPro Manager client configuration consists of 4 sections, each on a separate tab of the configuration window.

### POWER SETTINGS

The **Power Settings** tab allows you to configure power management actions and allows you to configure the following settings.



**Manage power on this machine.** Check this option to allow PowerPro Manager to manage the energy saving configuration of this computer.

**Shutdown based on a fixed time.** Allows you to specify a time when machines are forced to shut down. The user is not allowed to bypass this (though they could turn the machine back on afterwards).

**Level I and Level II Power Savings.** Level I settings are applied according to the schedule you specify on the Power Saving Schedule tab. Level II settings are applied Friday at 5:00pm until Sunday at Midnight.

#### Inactivity Timeout Actions

**Turn of the monitor after x minutes of inactivity.** Specify the amount of idle time (in minutes) that must pass before PowerPro Manager turns off the monitor.

**Reduce power after x minutes of inactivity.** Specify the amount of idle time (in minutes) that must pass before PowerPro Manager can reduce the power consumption. The power reduction method must be one of the following:

**Standby.** Place the computer in to standby mode.

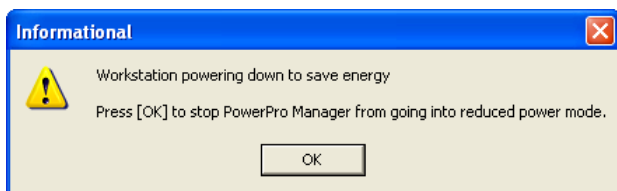
**Hibernate.** Place the computer in to hibernation mode.

**Shutdown.** Turn off the computer.

#### User Notification

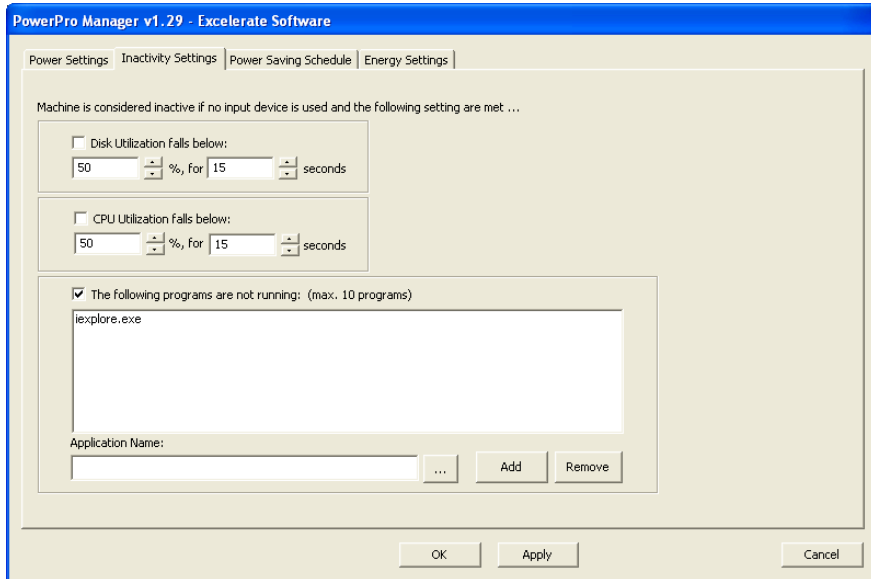
**Notify user of Power Savings action x minutes in advance.** When checked, a popup window will appear on the console the specified time before the Reduce power action is taken.

**Message to display: (max 512 characters).** Specifies the message presented on the console. See picture for an example.



INACTIVITY SETTINGS

The **Inactivity Settings** tab allows you to configure the detection of machine idleness. These settings fine tune the detection when no keyboard or mouse activity is detected.



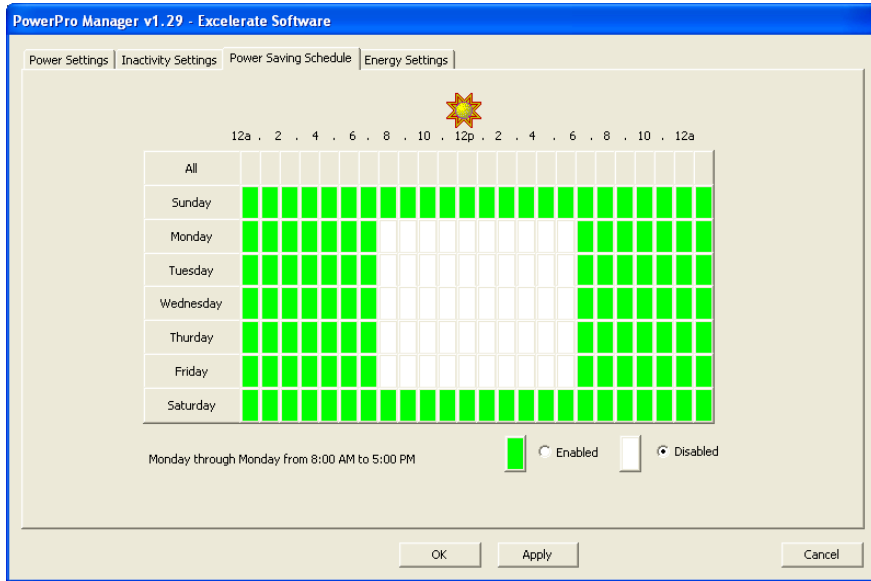
**Disk Utilization falls before x % for y seconds.** When checked, PowerPro Manager will consider the workstation idle if disk utilization is below the specified amount (as a percentage of total disk utilization) for at least the specified duration (in seconds). Keyboard or mouse activity must not be detected as well.

**CPU Utilization falls before x % for y seconds.** When checked, PowerPro Manager will consider the workstation idle if CPU utilization is below the specified amount (as a percentage of total disk utilization) for at least the specified duration (in seconds). Keyboard or mouse activity must not be detected as well.

**The following programs are not running:.** When checked, PowerPro Manger will verify that no programs in the defined list are active. If it detects one or more of these programs are running, the system will not be considered idle, and the machine will not enter power saving mode. To add programs to the list, specify the application’s process name as identified by the task manager, and then click **Add**. To remove a program from the list, highlight it and click **Remove**.

POWER SAVINGS SCHEDULE

The **Power Savings Schedule** tab allows you to configure when power savings features are in effect.

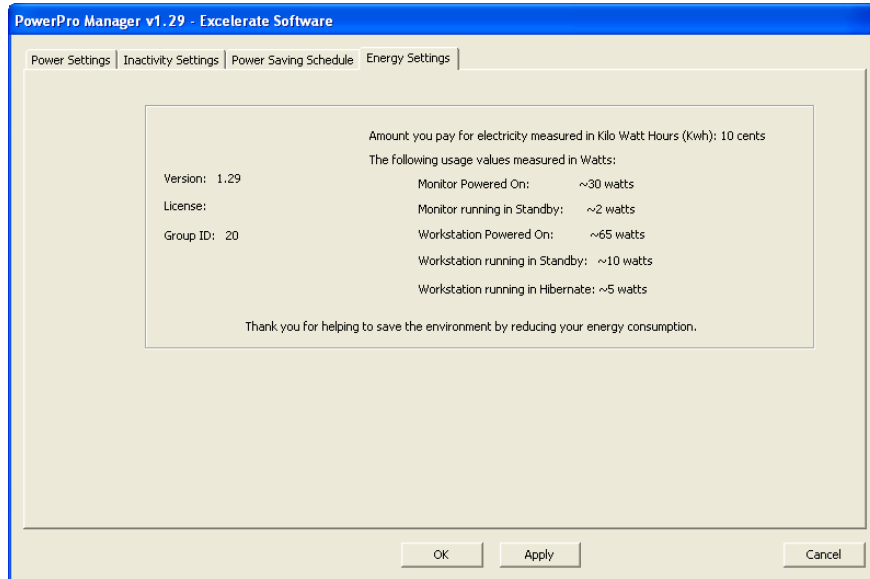


Hourly blocks of time are displayed as green or white. A green block indicates that power management features are enabled, and a white block indicates they are disabled.

To configure one or more blocks of time, drag your cursor across one or more blocks to select them. Then, click the **Enabled** button to enable power savings for the selected time. Click the **Disabled** button to disable power savings features for the selected time.

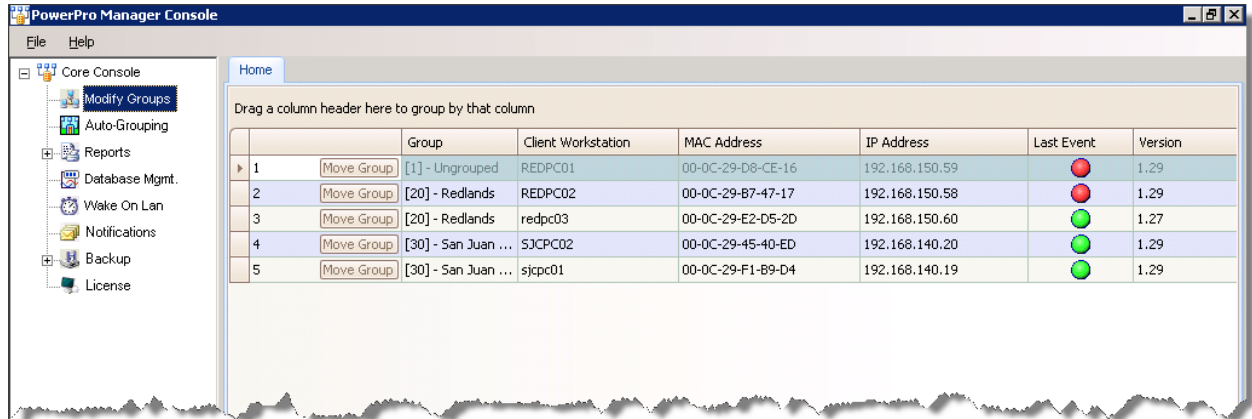
## ENERGY SETTINGS

The **Energy Settings** tab displays licensing information and power savings statistics. Note: statistics are only available when the PowerPro Manager is registered with the PowerPro Manager console.



**SERVER**

The PowerPro Management Console allows for enterprise management of PowerPro Management clients. To manage the configuration, start the PowerPro Manager Console from the installed location.



The PowerPro Manager Console is divided into 2 sections. The left window pane contains a hierarchical tree of actions. The right pane displays workstation details, such as groups, computer names, addressing information, status, WOL Proxy and configuration versions.

**Column Descriptions**

- Group: The group this computer is assigned to.
- Client Workstation: The computer name.
- MAC Address: The physical address of the computer
- IP Address: The computer’s identified IP Address.
- Last Event: The last recorded status of the computer, as follows:
  - On
  - Shut down
  - Monitor Off
  - Standby / Hibernate
- Version: PowerPro Manager Workstation version
- CfgVer: Configuration version
- Enabled: Indicates if power management is enabled from the Console.
- WOL Proxy: The IP Address of the assigned WOL Proxy computer for the subnet.
- Date/Time Event: The timestamp of the last communication from the client.

By default, PowerPro Manager workstations are added to the group named **Ungrouped**.

**MAIN CONSOLE ACTIONS**

The Core Console consists of the following action objects: Modify Groups, AutoGrouping, Reports, Database Management, Wake On Lan, Notifications, Backup and License.

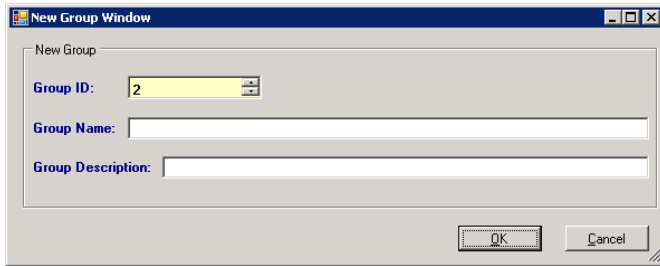
**MODIFY GROUPS**

Groups allow you to specify different power saving options for multiple computers. Group management is performed by double-clicking the **Modify Groups** object in the tree.

Computers are assigned the **Ungrouped** group by default, unless they match an Autogrouping rule.

## ADDING AND REMOVING GROUPS

To add a new group, click the **Add** button.



In the New Group Window, enter a Group ID, Group Name and a Group Description (optional).

Each Group ID must be unique.

Click **OK**.

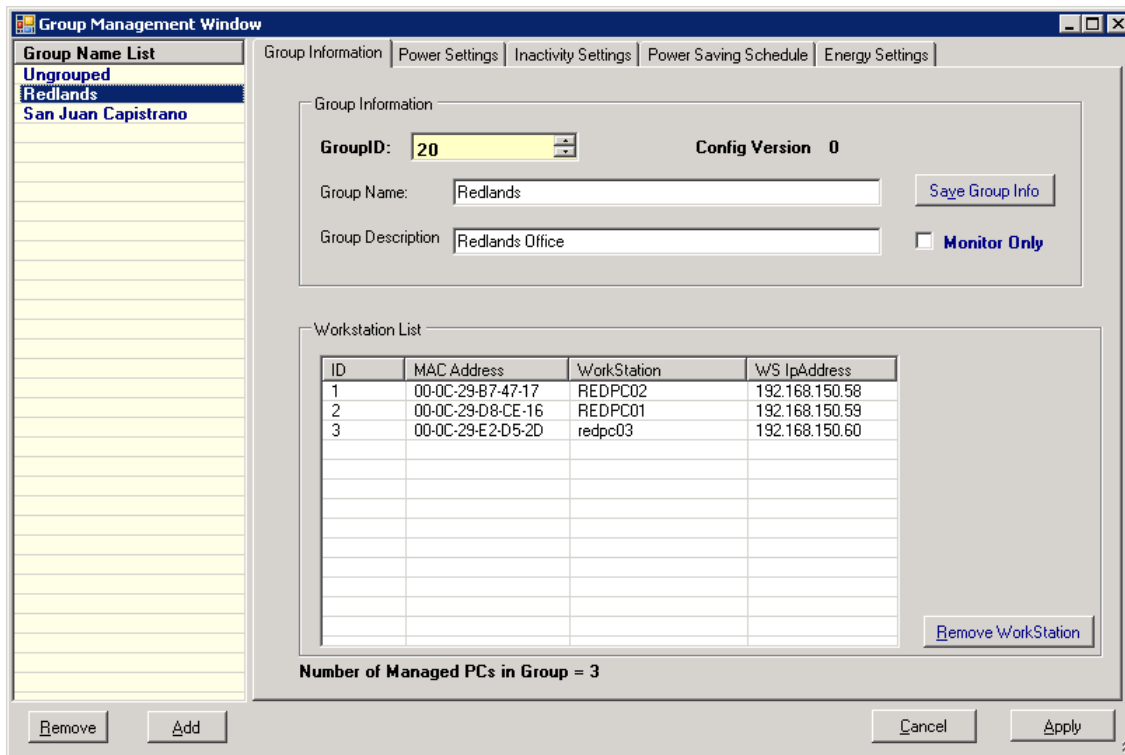
To remove an existing group, highlight the group in the list and click the **Remove** button.

## CONFIGURING GROUP POWER OPTIONS

In the tree, click Edit Configuration to access the configuration screens. The PowerPro Manager configuration consists of 5 sections, each on a separate tab of the configuration window. Select a group from the list to control and view its settings.

When the Apply button is pressed, each client is contacted to update the configuration- please let this process finish before closing the window. You may notice the indicator near the bottom of the window "Sending Configuration: x of y configured". If you are notified that tasks are running when attempting to close the window, then the update has not completed. Machines that are off should pick up their configuration when the service starts at boot time.

The **Group Information** tab allows you to specify group settings.

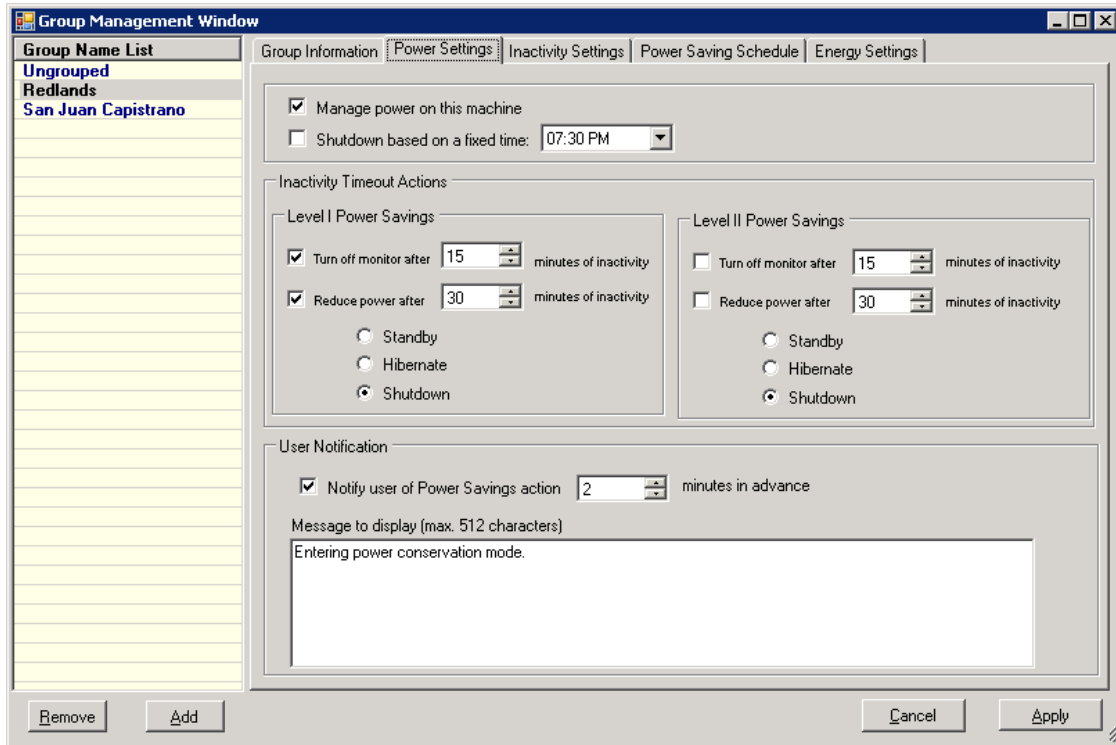


You may change the GroupID, Name and Description. Click the **Save Group Info** button to apply these changes.

Checking the **Monitor Only** option disables changes to the remaining tabs, and disables power management. Use this option to collect information only about computer behavior.

Groups designated as Monitor Only do not appear in the standard reports. You must use the Monitoring Report to gather information on these groups.

The **Power Settings** tab allows you to configure power management actions and the following settings for the selected group.



**Manage power on this machine.** Check this option to allow PowerPro Manager to manage the energy saving configuration of this computer.

**Shutdown based on a fixed time.** Allows you to specify a time when machines are forced to shut down. The user is not allowed to bypass this (though they could turn the machine back on afterwards).

**Level I and Level II Power Savings.** Level I settings are applied according to the schedule you specify on the Power Savings Schedule tab. Level II settings are applied Friday at 5:00pm until Sunday at Midnight.

**Inactivity Timeout Actions**

**Turn of the monitor after x minutes of inactivity.** Specify the amount of idle time (in minutes) that must pass before PowerPro Manager turns off the monitor.

**Reduce power after x minutes of inactivity.** Specify the amount of idle time (in minutes) that must pass before PowerPro Manager can reduce the power consumption. The power reduction method must be one of the following:

**Standby.** Place the computer in to standby mode.

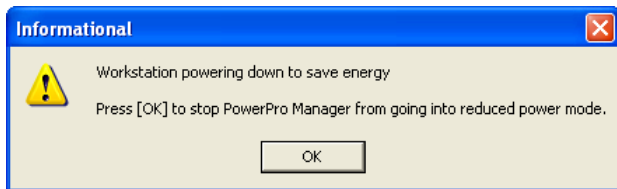
**Hibernate.** Place the computer in to hibernation mode.

**Shutdown.** Turn off the computer.

### User Notification

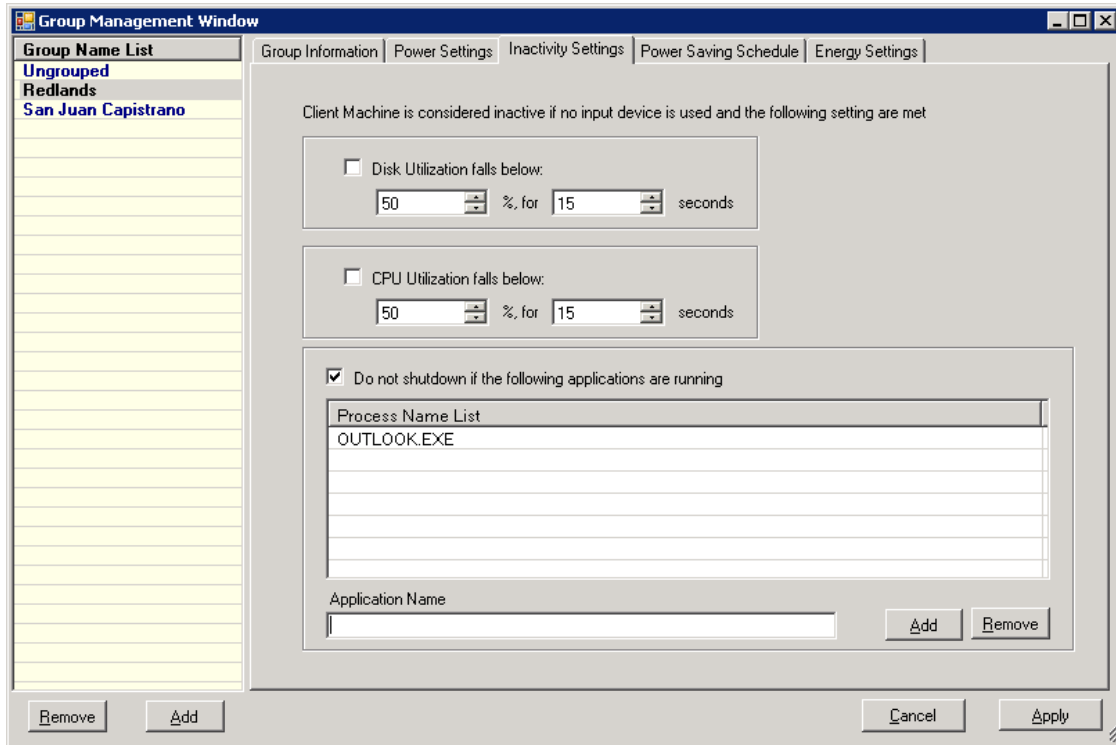
**Notify user of Power Savings action x minutes in advance.** When checked, a popup window will appear on the console the configured number of minutes before the Reduce power action is taken.

**Message to display: (max 512 characters).** Specifies the message presented on the console. See picture for an example.



If you specify to turn off the monitor, the notification feature is disabled.

The **Inactivity Settings** tab allows you to configure the detection of machine idleness. These settings fine tune the detection when no keyboard or mouse activity is detected.



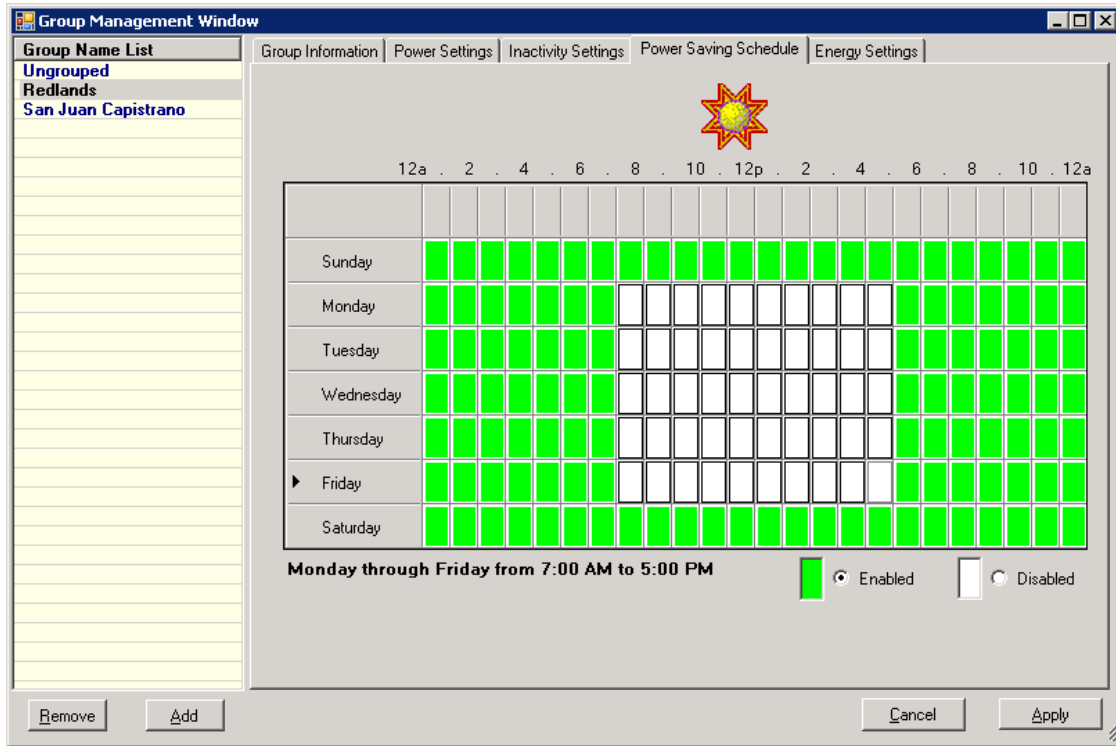
**Disk Utilization falls before x % for y seconds.** When checked, PowerPro Manager will consider the workstation idle if disk utilization is below the specified amount (as a percentage of total disk utilization) for at least the specified duration (in seconds). Keyboard or mouse activity must not be detected as well.

**CPU Utilization falls before x % for y seconds.** When checked, PowerPro Manager will consider the workstation idle if CPU utilization is below the specified amount (as a percentage of total disk utilization) for at least the specified duration (in seconds). Keyboard or mouse activity must not be detected as well.

**The following programs are not running:** When checked, PowerPro Manger will verify that no programs in the defined list are active. If it detects one or more of these programs are running, the system will not be considered idle, and the machine will not enter power saving mode. Use the Add and Remove buttons to modify the entry list. Each application is identified by its process name as identified in the task manager.

For best results, disable the Disk and CPU utilization options until you establish a baseline for normal operations.

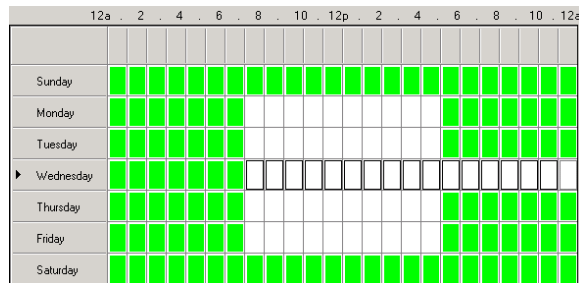
The **Power Savings Schedule** tab allows you to configure when power savings features are in effect.



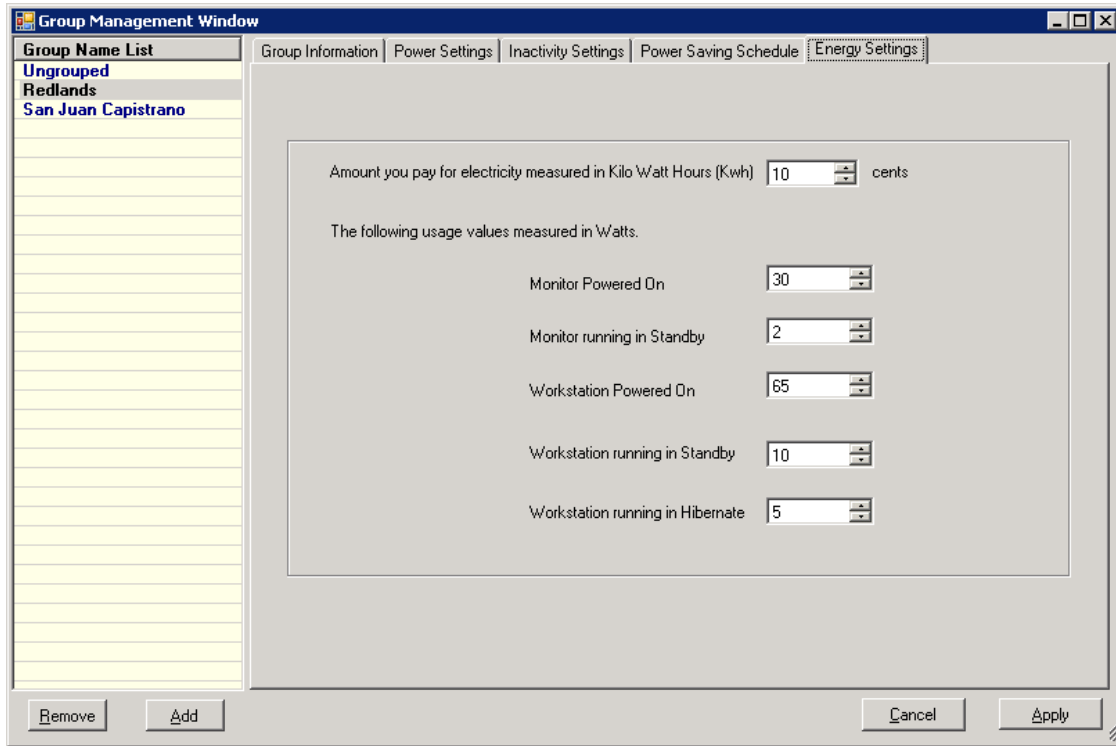
Hourly blocks of time are displayed as green or white. A green block indicates that power management features are enabled, and a white block indicates they are disabled.

To configure one or more blocks of time, drag your cursor across one or more blocks to select them. Then, click the **Enabled** button to enable power savings for the selected time. Click the **Disabled** button to disable power savings features for the selected time.

If you have predefined maintenance periods, extend the disabled time blocks to include them. For example, if you have configured your Windows computers to update each Wednesday at 10pm, you may extend the disabled time on Wednesdays until midnight.



The **Energy Settings** tab allows you to configure the metrics used to determine energy and cost savings.



---

## ADDING/REMOVING COMPUTERS TO/FROM GROUPS

### REMOVING COMPUTERS

---

By default, computers that do not connect to the PowerPro Manager Console for over 30 days are automatically removed from the system. If a removed computer communicates with the console, it will be re-added to the Ungrouped group unless an Autogrouping rule applies.

To manually remove a computer, select it from the list and click the **Remove Workstation** button. You will be prompted to confirm the account deletion.

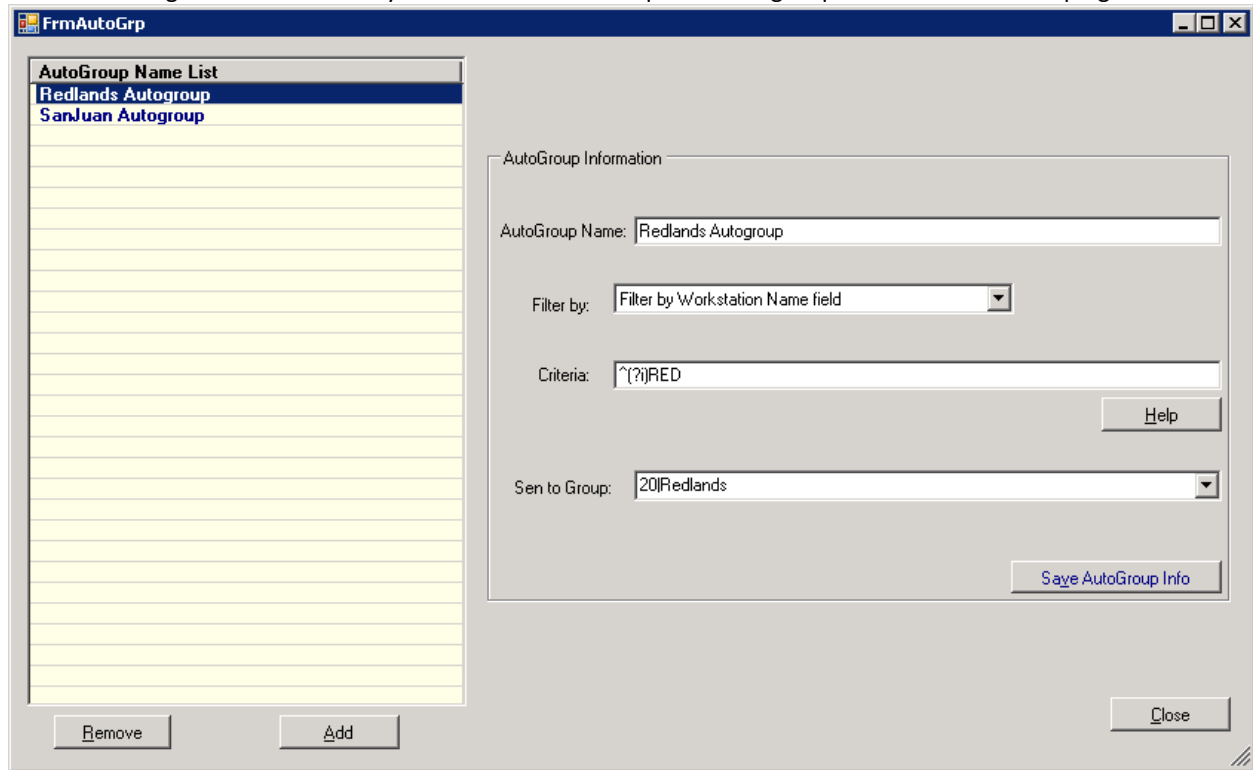
### MOVING COMPUTERS

---

In the main console, highlight the computer(s) to move. Right-click the selection and then select **Move Workstation(s) to a Group**. A new window will appear. Double-click the name of the group to move the selected computers to.

## AUTO-GROUPING

PowerPro Manger can automatically move workstations to predefined groups with the Auto-Grouping feature.



Use the Add and Remove buttons to modify the rule list. Configure the rules as follows:

**AutoGroup Name:** a descriptive name for the rule

**Filter by:** Select from the following:  
 Filter by Workstation Name field  
 Filter by IP Address field

**Criteria:** PowerPro Manager utilizes Regular Expressions for its matching criteria. If filtering by workstation name, use the expression *^{string}* to match all computers whose name starts with *string*. See the Regular Expression section below for more information.

**Send to Group:** specified group to assign the matching workstation to.

When you are satisfied with the changes, click the **Save AutoGroup Info** button, then click Close.

## REGULAR EXPRESSIONS

### PowerPro Manager Regular Expression Summary

#### Special Character Matches

.	any single character, except newline
+	quantifier- 1 or more times
*	quantifier- 0 or more times
^	anchor- start of line
\$	anchor- end of line
(?i)	case insensitive match toggle
(?!x)	force a match failure upon x
\	escape, force literal interpretation of the next character

#### Examples

**AHS** matches **AHSPC01**, **AHS-Admin02**, **CAHSRM321**, but not **ahs-rm2-pc3** nor **AhSPC203**.

**(?i)PCS** matches **PCS-Acct-WS01**, **BHS-PCS-W1**, **pcs-lab3-pc1**

**^(?i)SHS** matches **SHS-B32-R3-04**, **shspc4**, but not **CASHS-R043-T01**

**.....PC** (8 periods) matches **SHS-R03PC02** and **PMSDACCTPC43**. This can be shorthanded as **{8}PC**

**.\*PC** matches **SHSPC04**, **PC-lab32-ws4**, **CAPCOM43**

**(?i)VM\$** matches **AHS-PC32-VM**, but not **XP-VM32**

**^(?!DO-DIRECTOR)DO** does not match **DO-DIRECTOR**, but matches **DO-PAY-PC04**, **DOTS04**, **DO-IT-Laptop**

**172.16.10.\*** does indeed match **172.16.10.1** through **172.16.10.254**. It also matches **172.16.10.999** and **172a16b10stuffhere**. Remember that "." is any character, not simply a period. To exactly match the period, escape each octet separating instance, such as **172\.16\.10\.\***. It would not match, for example, **172.016.010.003**, since the padded 0's are not accounted for.

For detailed information on Regular Expressions, we recommend the following resources:

#### Books

Mastering Regular Expressions by Jeffrey Friedl, O'Reilly

Regular Expressions Cookbook, by Jan Goyvaerts and Steven Levithan

#### Websites

<http://www.regular-expressions.info>

<http://www.regexpal.com>

#### Software

Regex Buddy <http://www.regexbuddy.com>

---

## REPORTS

The Reports item contains two sub-items: Custom Report and Create Report for generating report information about the managed computers and their power consumption. Reports can be targeted to specific IP Address or Workstation Name patterns.

---

### CUSTOM REPORT

Like groups, use the Add and Remove buttons to create and remove custom reports. To modify an existing report, select its name from the left pane and edit the criteria in the left pane. Each custom report contains the following:

**Report Name.** You must enter a name for the report. Choose a name that will help identify the type or scope of report you are creating.

**Filter by:** Select either **Filter by Workstation Name field** or **Filter by IP Address field**.

**Criteria.** PowerPro Manager utilizes Regular Expressions for its matching criteria. If filtering by workstation name, use the expression `^string` to match all computers whose name starts with `string`. See the Regular Expression section above for more information.

**Comments.** You may optionally enter a descriptive comment for the report.

When you are satisfied with the report configuration, click **Save Custom Report Info**.

---

### CREATE REPORT

Double-click to select either **Create Report from Scratch** or a previously created Custom Report. In the resulting window, select the start and end times for the report period. If you selected a custom report, the filter criteria is predetermined. If you elected to create a report for scratch, enter the filtering criteria as follows:

Select either **Filter by Workstation Name field** or **Filter by IP Address field**.

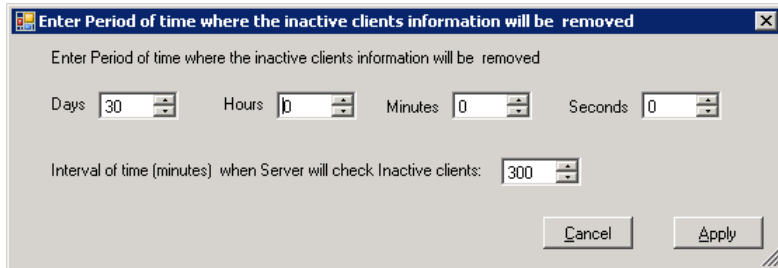
**Filter:** Specify the report filter, using Regular Expressions. See the Regular Expression section above for syntax and more information.

Click **Get Report** to generate the report details. Once complete, you may save the report to the by clicking **Save Report**. Reports are saved in .html format and can be viewed most Internet browsers.

Some organizations have organized contests to see who can save the most energy and publish the report results on their intranet.

DATABASE MANAGEMENT

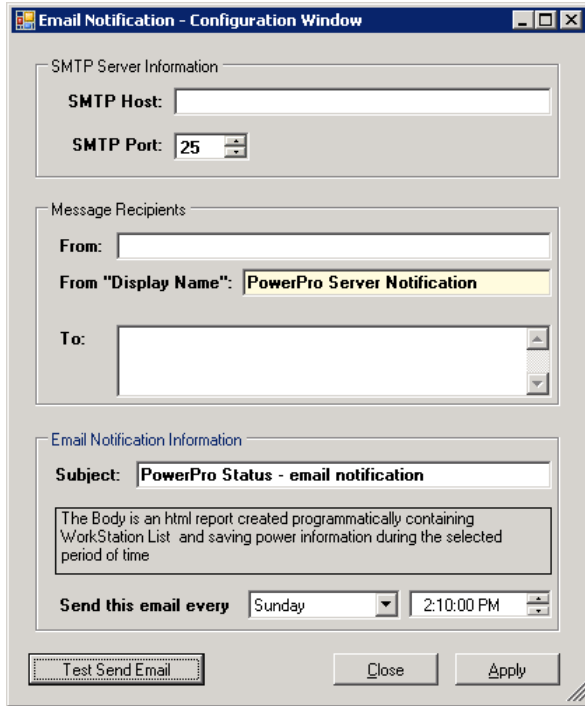
Workstations that do not communicate with the console after a period of time are purged from the database. Specify the retention time in the resulting screen. Additionally, the console will attempt to check on clients to determine their status. This time may also be adjusted here.





**NOTIFICATIONS.**

Configure email notification to receive updates about the PowerPro Management system status by configuring the following.



**SMTP Host:** the SMTP server to send email through. Please note that the server must allow anonymous access to the connection.

**SMTP Port:** Typically 25, but may be adjusted if you environment requires.

**From:** The sending email address. For example, you can use **powerpro@yourcompany.org**.

**From "Display Name":** The name to display in the message.

**To:** Your energy conservation and/or technology email addresses. To specify multiple addresses, separate them by semi-colons.

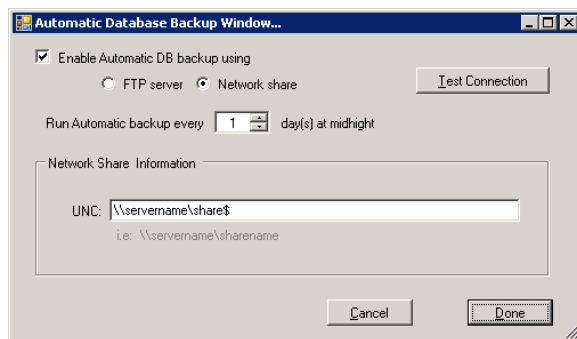
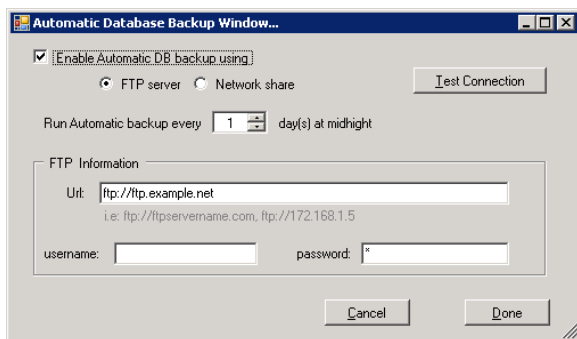
**Subject:** The notification email subject line.

**Send this email every:** Day and time to send the emails.

**BACKUP**

**Manual Backup.** When clicked, a backup copy of the database is created in the C:\ExcelerateSoftware\Backup folder.

**Automatic Backup.** Specify the backup location (either FTP or Network Share) parameters and schedule.



Each backup is identified by the time the backup was taken, and multiple backups may be stored.

**LICENSE**

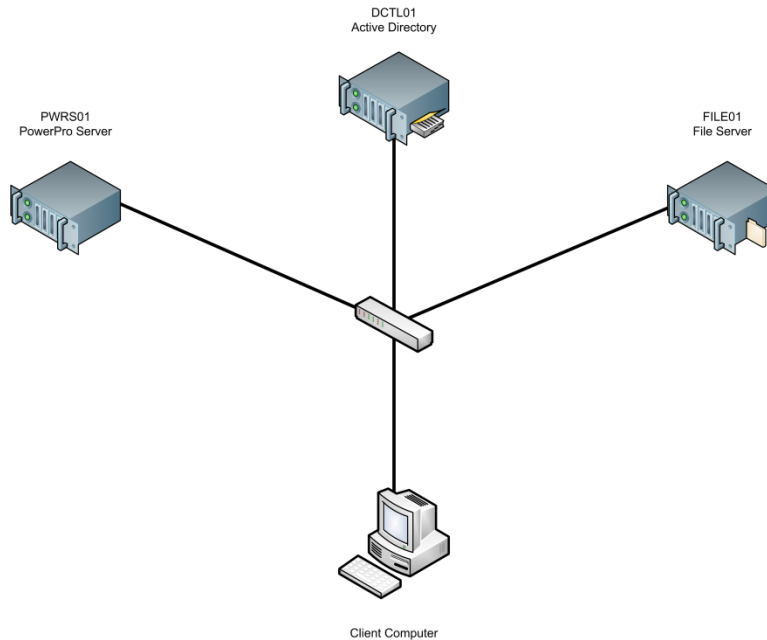
Double-clicking the License item displays the license agreement.

## APPENDIX A – ACTIVE DIRECTORY GPO BASED DEPLOYMENT

Active Directory can be utilized to deploy the PowerPro client to domain member computers. Use the following steps as a guideline.

### Example Configuration Environment

Our example environment consists of the domain greenco.com and its computers:



Create a deployment share for the PowerPro client .msi file. This location must be accessible from all client computers to be deployed to. The client computers need read access to the software.

### Example Configuration Steps

On the file server, create the folder, assign permissions and share it.

```
c:
cd \
md powerpro
icacls powerpro /inheritance:disable
icacls powerpro /g:r builtin\administrators:F /grant:r builtin\users:RX /grant:r
  ↳ "NT Authority\Authenticated Users":RX
net share powerpro=c:\powerpro /grant:Everyone,F
```

On the Active Directory Domain Controller, create a new policy to install the software on managed computers. The policy should assign the software to the computers and be set to uninstall when they fall out of the management scope. The package location should be the UNC path to the .msi setup file (in our example environment, this would be \\FILE01\powerpro\PowerProManagementServiceSetup.msi).



In the new policy, expand Computer Configuration and Software Settings. Create a new package in the Software Installation object.

