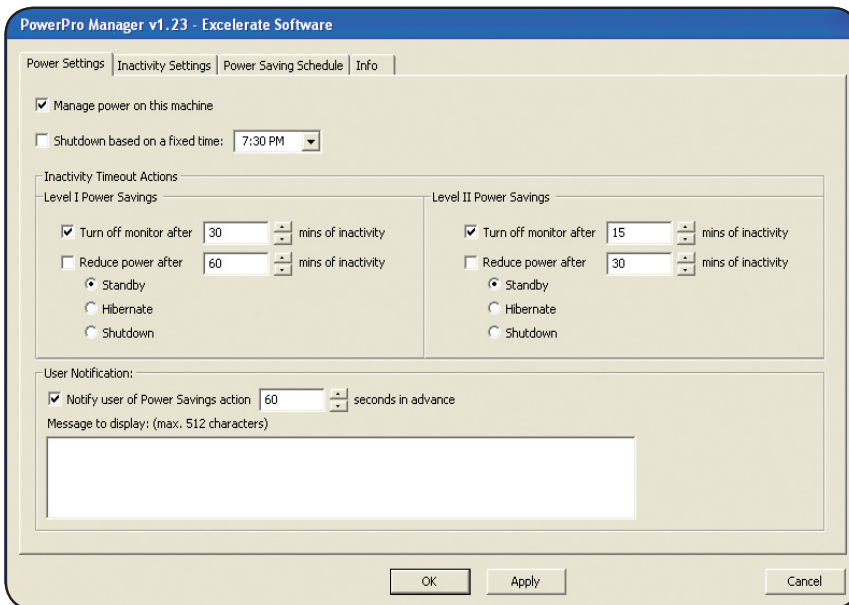


Managing Energy Usage

PowerPRO Manager™ is an energy saving software application which automatically shuts down computers when they are not being used. This provides organizations with energy savings on every computer, approximately \$35-\$50 per PC per year, by automating power management of your computers rather than relying on multiple people to perform this daily task.

Additionally, **PowerPRO Manager™** is environmentally responsible by helping lower the carbon emissions computer energy generates by powering computers down when not in use. PowerPRO Manager™ offers a complete return on investment usually within the first six months of deployment.

Built-in features include group scheduling to manage power save settings, easy-to-use reports to track your energy savings, and settings based on CPU, disk, and application activity.



▲ A screen-shot of some of the softwares abilities.

Benefits of PowerPRO Manager™

- Greatly reduces energy costs for your organization.
- Encourages environmental responsibility by conserving energy.
- Automates energy savings during evening, weekend, and holiday hours without relying on staff.
- Effortless computer energy management that is non-problematic for your IT group and end users.
- Easy-to-run quantitative reports for tracking and reporting energy consumption and energy savings.
- Control power save setting levels for different groups within your organization.
- Manage inactivity timeouts, with the option of notifying users before energy saving action is taken.

“ By enabling the power management, or sleep mode, on their computers and monitors, organizations will help reduce our growing demand for electricity, and save money while fighting climate change. If all office computers and monitors in the United States were set to sleep when not being used, the country could save more than 44 billion kWh or \$4 billion worth of electricity and avoid the greenhouse gas emissions equivalent to those of about 5 million cars each year.”

U.S. Environmental Protection Agency (April 3, 2008)

Key Features

- Easy-to-use scheduler (i.e., Administrators' computers would not shutdown between 8-5).
- Options to turn off the monitor, and standby, hibernate or shutdown the computer.
- Confirmation prompts before shutdown.
- Definitions can be based on CPU, disk, keyboard, mouse and application activity.
- Deployment with group policy installation MSI files or script install.
- Granular inactivity definitions on disk and CPU activity.
- Define applications where you would not want to shut down the workstation.

PowerPRO Manager™ Report Generator

- PowerPRO Manager™ provides a power consumption reporting tool.
- Detailed consumption reporting allows you see how much power you are saving based upon your pre-determined energy-saving goals.

Kennedy High School

PowerPro Manager Energy Savings Report: 2/10/2009 12:00:00 AM to 2/10/2009 10:03:42 AM

Report Summary

Start Time:	2/10/2009 12:00:00 AM
End Time:	2/10/2009 10:03:42 AM
Report Created:	2/10/2009 10:03:42 AM
Number of Workstations:	3
Power Cost:	\$0.10
Average Savings:	\$0.08
Total Energy Savings:	\$0.25
Total Energy Consumed:	14.67 kW
Total Energy Saved:	2.22 kW

Name	Monitor days	Standby hours	Standby days	Standby hours	Off days	Off hours	Energy Saved	Energy Consumed	Savings
eve	00	0.00	00	8.32	00	10.06	1.57 kW	6.16 kW	\$0.18
dvmoffice	00	0.00	00	0.00	00	10.06	0.65 kW	6.54 kW	\$0.07
damian-desktop	00	0.00	00	0.00	00	0.00	0.00 kW	1.96 kW	\$0.00
Total Savings									\$0.25

Versions for



▲ A typical PowerPro Manager report on energy savings.

System Requirements:

The PowerPRO Manager™ client supports Windows 2000, Windows XP, Windows Vista and Apple Mac OS X.

The PowerPRO Manager™ console computer requires Windows XP or Windows 2003 Server.

District wide licenses available for Education customers.